

### Our School Pepeha

*Pepeha is a way of introducing yourself in maori. It tells people who you are by sharing your connections with the people and places that are local to our area.*

***Ko Tainui te waka**  
My canoe is Tainui*

***Ko Mangawara te awa**  
My river is Mangawara*

***Ko Hapuakohe te maunga**  
My Mountain is Hapuakohe*

***Ko Waiti te marae**  
My Marae is Waiti*

***Ko Ngati Paoa te iwi**  
My tribe is Ngati Paoa*

***Ko Tahuna te kura**  
My school is Tahuna School*



### Principal's Comment

It has been humbling to see many of our tamariki displaying our value of **encourage**. Hearing positive comments that are kind and supportive is an essential part of building and maintaining a positive school culture that we are proud of. Many thanks to our tamariki!

With our focus on Tahuna Mahi Tahī (home/school partnership- working together) I presented at our last assembly 45 reading nights awards and I will take this opportunity to thank our tamariki and parents for supporting Tahuna Mahi Tahī.

I would like to take this moment to thank our hardworking, and dedicated teachers and staff for your positive efforts and continued support to provide our tamariki with interesting, and meaningful learning opportunities.

***Ehara taku toa i te toa takitahi, he toa takitini**  
My strength is not as an individual, but as a collective*

### Thank You Morning Teas

Our staff are so thankful for the morning teas that have been provided by our parents. The soups, breads, cakes, muffins, risotto and loaf - all very yummy!

### The Arts Festival

Our classrooms have been in action learning and practicing their items for our Arts Festival. The festival will be on Thursday the 14th September at the Tahuna Hall. Time to be advised. Our children and staff are looking forward to producing a wonderful show for all.

If you would like to help on the evening or leading up to the event contact Miss I'Anson at school.

## Week 2 Assembly

### Class Awards

Congratulations for your hardwork and dedication to your learning.

<b>Endeavour</b>	- Eli and Lucas
<b>Endurance</b>	- Charlie and Jayleigh
<b>Maungaturoto</b>	- Jackson and Emilia
<b>Adventure</b>	- William and Olivia
<b>Discovery</b>	- Logan and Kayla

### ICARE Awards

Awesome and thanks for showing our ICARES Values.

**ICARE Award winners** - Olive, Toby and Eden.

Integrity:	<i>Ralph</i>	including people in his games and sharing his sports equipment with others!
Encourage:	<i>Lucas</i>	for talking to Mr K nicely.
Encourage:	<i>Rebecca</i>	she encouraged her friends to play nicely together.
Respect:	<i>Liviana</i>	for listening to instructions first time and cleaning our class.
Respect:	<i>Jyrome</i>	for listening to instructions first time and cleaning our room.
Encourage:	<i>Ridge</i>	encouraging others in his games.
Integrity:	<i>Marty</i>	telling the others to line up under cover when it was raining.



### Junior Evening - Transition to school - Tahuna Mahi Tahī

Thank you to our parents who attended our successful evening. Thank you to Miss Herkes and Miss l'Anson for your commitment in organising an informative and collaborative evening for our parents.

## **Absent / Late child / Going home**

- If your child is absent from school or is going to be late, if possible please contact our school office by 8.45am.
- It's really important that we have your child to school by 8.45am. This allows them to get a full day of learning and gives your child the best possible opportunity to develop their learning.
- If you are taking out your child for an appointment during school hours please come to the school office to sign your child out.
- If you need to make a change for your child going home on bus or van let the office know by 2pm at the latest please.

## **Change of contacts**

- If you have recently changed address, phone number or email address please let us know so we can update contact details.

## **Updated medical supplies - ensuring health and safety of our tamariki**

- If your child's medicine has expired please replace it at the office. If you need to come in and check please do so now.

**Thank you**

## **Matariki Disco**

On Thursday the 20th July we had our fantastic Matariki Disco. Our event was well attended with lots of our tamariki and thanks to all parents for supporting our event.

## **Morrinsville Intermediate Information for Year 6 students (Transition to Intermediate)**

On Wednesday Jenny Clark principal of MIS and some yr 7 MIS students (Caitlin and Micah) visited our yr 6 tamariki to give information about the learning opportunities MIS offer. It was an awesome visit and we appreciate MIS for coming out to us.

### ***Key Dates to be aware of:***

1. Open Evening: Wednesday 23rd August 6.00p.m. – 8.00p.m. (including a showcase of students and their learning)
2. Open Morning: Wednesday 30th August 11.00 a.m. – 12.30 p.m.

All Year 6 students are invited to our Orientation Day on Friday 1st December (Term 4 week 8) from 11.00 a.m. – 12.30 p.m. where they will meet their 2024 teacher.

## **Fire Drill**

On Thursday our tamariki and staff did a fire drill practice. The drill is to ensure we are aware of what to do in an event of a fire on school grounds.

## **School Policies – SchoolDocs**

Our school policies are on a website called SchoolDocs. SchoolDocs provides us with policies, which have been researched and follow the Ministry of Education guidelines. The website is:

<https://tahuna.schooldocs.co.nz/>

The username is: **tahuna** and the password is: **cares**

***Ngaa Mihi  
Phillip and Staff***

## Dates to Remember

- **25th August (Friday)**  
Daffodil Day – Dressup and Gold Coin Donation for Cancer Foundation
- **28th August (Monday)**  
BOT Meeting
- **14th September (Thursday)**  
Arts Festival – TBA
- **22nd September (Friday)**  
Last day of Term 3.  
School finishes at 2.30pm

## Term 4

- 9th October (Monday)  
First Day of Term
- 23rd October (Monday)  
Labour Day – Public Holiday
- 26th October (Thursday)  
Morrinsville Children's Livestock Group Day
- 19th November (Monday)  
Teacher Only Day

## Discovery Room



- **Skipping for Fitness**
- **Daffodil Art made with PVA glue and chalk pastels.**  
(on display in ANZ bank, Morrinsville soon!)



## Maungaturoto News

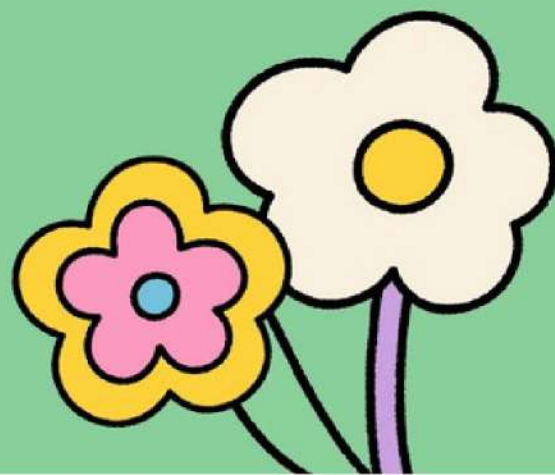
Maungaturoto students have had a busy start to Term 3. They have worked together to learn more about Matariki and made a large wall hanging. The FIFA Soccer World Cup has really inspired us all. We have studied more about the different countries and about our favourite football player. It was exciting to design our own football uniform, using patterns and colours that are meaningful to us.



# ENDEAVOUR'S

## 100 DAYS OF SCHOOL

Endeavour had a mini class celebration to mark 100 days of school this year. We wrote stories about what we would be like when we are 100 years old, made 100 paper links to hang up, lots of counting games and made fairy bread with 100's and 1000's.



# Please support our Sponsors

**BAYLEYS**

Your 'go to' person for all your real estate requirements.

Mike Fraser-Jones  
027 475 9680

SUCCESS REALTY LTD, BAYLEYS, LICENSED UNDER THE REA ACT 2006.

[bayleys.co.nz](http://bayleys.co.nz)

TAHUNA



**Tahuna GAS**

PH: 07-887-5656



Open 7 days a week

**ASL**

Andy Smith Livestock Ltd  
Morrinsville - Matamata

Trucking since 1945



Livestock Carriage | Metal | Sand | Fertiliser

Email [aslgeneral@xtra.co.nz](mailto:aslgeneral@xtra.co.nz) Phone 07 889 5179

**MCMILLAN**  
ELECTRICAL SOLUTIONS

PH. 0274 367 637

SOLUTIONS MADE EASY

AGRICULTURAL | COMMERCIAL | INDUSTRIAL | DOMESTIC

[steve@mes.co.nz](mailto:steve@mes.co.nz)  
[mcmillanelectricalsolutions.co.nz](http://mcmillanelectricalsolutions.co.nz)

**ALLENS UNITED**

WAIKATO 1986 LTD

Ph 078461294

Specialists in Liquid Waste Treatment & Disposal  
12000L Certified Domestic & Rural Water Carriers  
Hydro Excavation, Jetting Unit & CCTV Camera  
Septic Tank Cleaning



[allensunited@xtra.co.nz](mailto:allensunited@xtra.co.nz) [www.allensunited.co.nz](http://www.allensunited.co.nz)

**Morrinsville Decor**

Paint + Drapes + Wallpaper + Flooring



153 Thames Street, Morrinsville | Ph 07 889 5298

TE HOE HOME KILLS 2014 LTD



FOR ALL YOUR FREEZER REQUIREMENTS

BEEF - PORK - MUTTON  
- BACON - HAM

Ph The Team at Te Hoe

Shop at Te Hoe

Mobile

07 824 4497 0274 936 661

**LEHMANN**  
Building Limited

Dean  
0211 824 835  
[lehmannbuilding@hotmail.com](mailto:lehmannbuilding@hotmail.com)  
[www.lehmannbuilding.co.nz](http://www.lehmannbuilding.co.nz)



Gas Fitting

New Build Plumbing & Gas

Kitchen & Bathroom Renovation

Plumbing Maintenance

**GAVINS**

Contracting Services

Stock Feed

Earthworks and Excavation

Farming Cropping supplies

07 824 3519

**TAHUNA ELECTRICAL**

Servicing Home and Farm

021 756175  
07 889 6091  
[richardprint@live.com](mailto:richardprint@live.com)

REPAIRS FAULTS RENOVATIONS NEW INSTALLATIONS  
SHEDS

Phone / Text / Email or leave a message on the landline

# \$2 From every Tonne of Functional Fertiliser purchased will go towards your School.

We've been around a while, slowly but surely perfecting our product. A product that doesn't fight Mother Nature but works with her to optimum performance levels. Trusted, reliable, easy to use.

**CALCIZEST.** Applied from a spreader, this is a unique soil improver containing Calcium, Bio Carbons and selected microbes for increased plant growth and optimum soil health.

**DOLOZEST.** Also applied from a spreader, Dolomite is a natural soil conditioner. A synergy is created by blending with the unique Zest component which makes it a fast-acting magnesium fertilizer and kick starts the process of building soil humus.

Both of these products also help the soil to breathe and unlocks existing nutrients stored underground. This is effective and crucial for the ongoing process of regenerative farming. It gets "air into your dirt".

For more detailed information see our website [www.functionalfertiliser.co.nz](http://www.functionalfertiliser.co.nz) or phone our on farm expert

Stores are in Te Teko, Taupo, Tasman, Canterbury and Oamaru. Watch out for more depots opening!



1. It substantially increases normal soil activity naturally.
2. Helps reduce pest and disease pressure.
3. Stronger clover/non reliance on synthetic N
4. More energy per Kg of dry matter, higher levels of production.
5. It enables you to grow longer into a dry spell and recover more quickly.
6. It reduces Greenhouse gas emissions by increased Carbon sequestration.
7. Builds pasture cover for winter.

*This fertiliser is best used in conjunction with a total nutrient programme.*



USE WITH CONFIDENCE WE CAN ALSO OFFER BIO CERTIFIED MIXES!

**Functional**  
FERTILISER  
FROM THE GROUND UP

YOUR LOCAL CONTACT

Charis Work 027 257 1343  
[charis@functionalfertiliser.co.nz](mailto:charis@functionalfertiliser.co.nz)  
[www.functionalfertiliser.co.nz](http://www.functionalfertiliser.co.nz)

